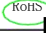


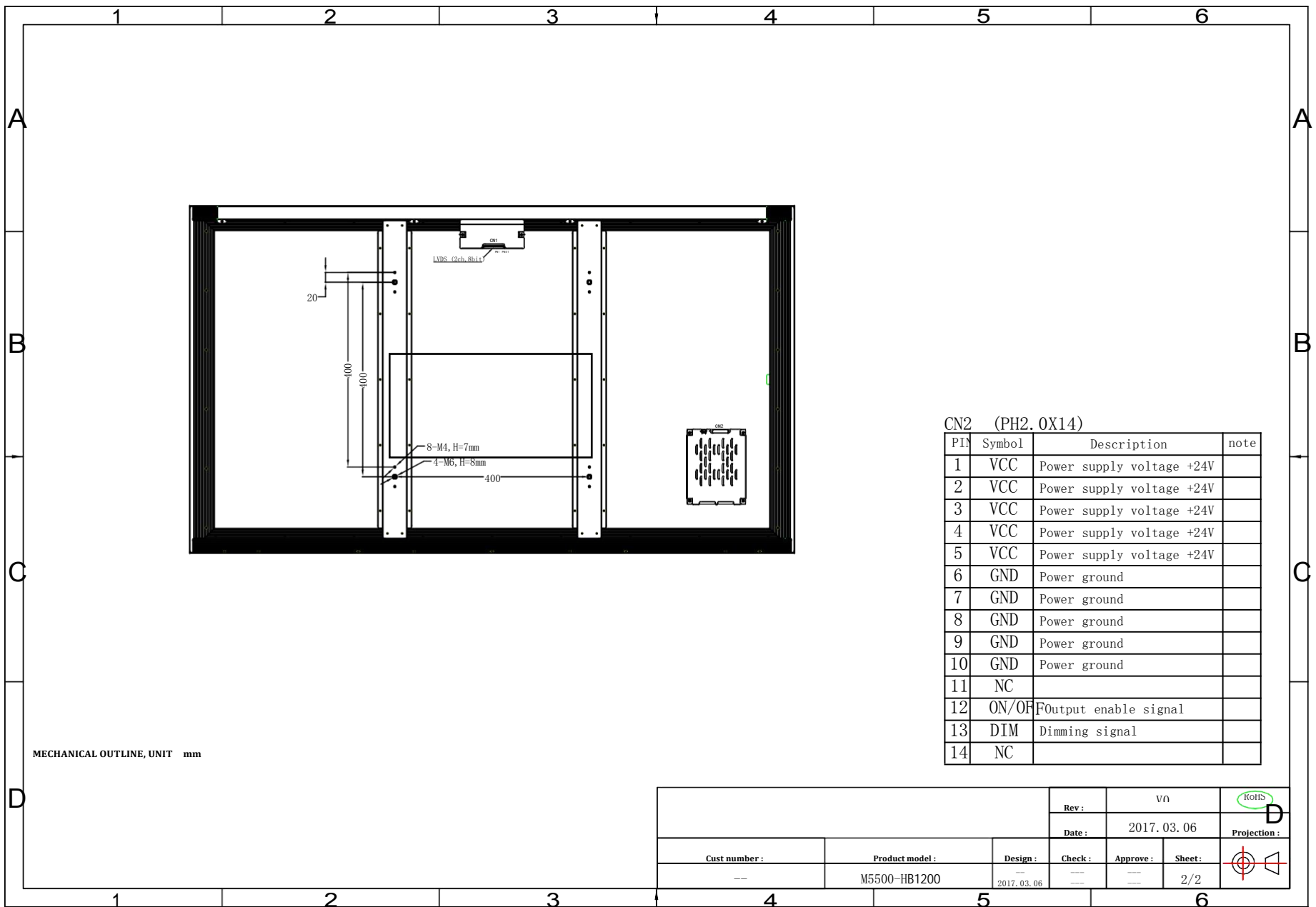


MECHANICAL OUTLINE, UNIT mm

M5500-HB1200

| | | | | | | |
|---------------|-----------------|------------|---------|--------------|---------|---|
| | | | Rev : | V0 | |  Projection : |
| | | | Date : | 2017. 03. 06 | | |
| Cust number : | Product model : | Design : | Check : | Approve : | Sheet : |   |
| -- | M5500-HB1200 | 2017.03.06 | -- | -- | 1/2 | |



MECHANICAL OUTLINE, UNIT mm

CN2 (PH2.0X14)

| PIN | Symbol | Description | note |
|-----|--------|---------------------------|------|
| 1 | VCC | Power supply voltage +24V | |
| 2 | VCC | Power supply voltage +24V | |
| 3 | VCC | Power supply voltage +24V | |
| 4 | VCC | Power supply voltage +24V | |
| 5 | VCC | Power supply voltage +24V | |
| 6 | GND | Power ground | |
| 7 | GND | Power ground | |
| 8 | GND | Power ground | |
| 9 | GND | Power ground | |
| 10 | GND | Power ground | |
| 11 | NC | | |
| 12 | ON/OFF | Output enable signal | |
| 13 | DIM | Dimming signal | |
| 14 | NC | | |

| | | | | | |
|---------------|-----------------|--------------|---------|--------------|---------|
| Rev : | | v0 | | ROHS | |
| Date : | | 2017. 03. 06 | | Projection : | |
| Cust number : | Product model : | Design : | Check : | Approve : | Sheet : |
| -- | M5500-HB1200 | 2017.03.06 | -- | -- | 2/2 |

